

Healthy Soils ,Healthy Foods

South West Goulburn Land Care Network

Paul Fleming, Rod Caplehorn, Brenton Byerlee (SMS) Mark Cotter, Sonia Sharkey,

2013 Ongoing

This project is supported by the Goulburn Broken Catchment Management Authority's Beyond SoilCare program through funding from the Australian Government's National Landcare Program.





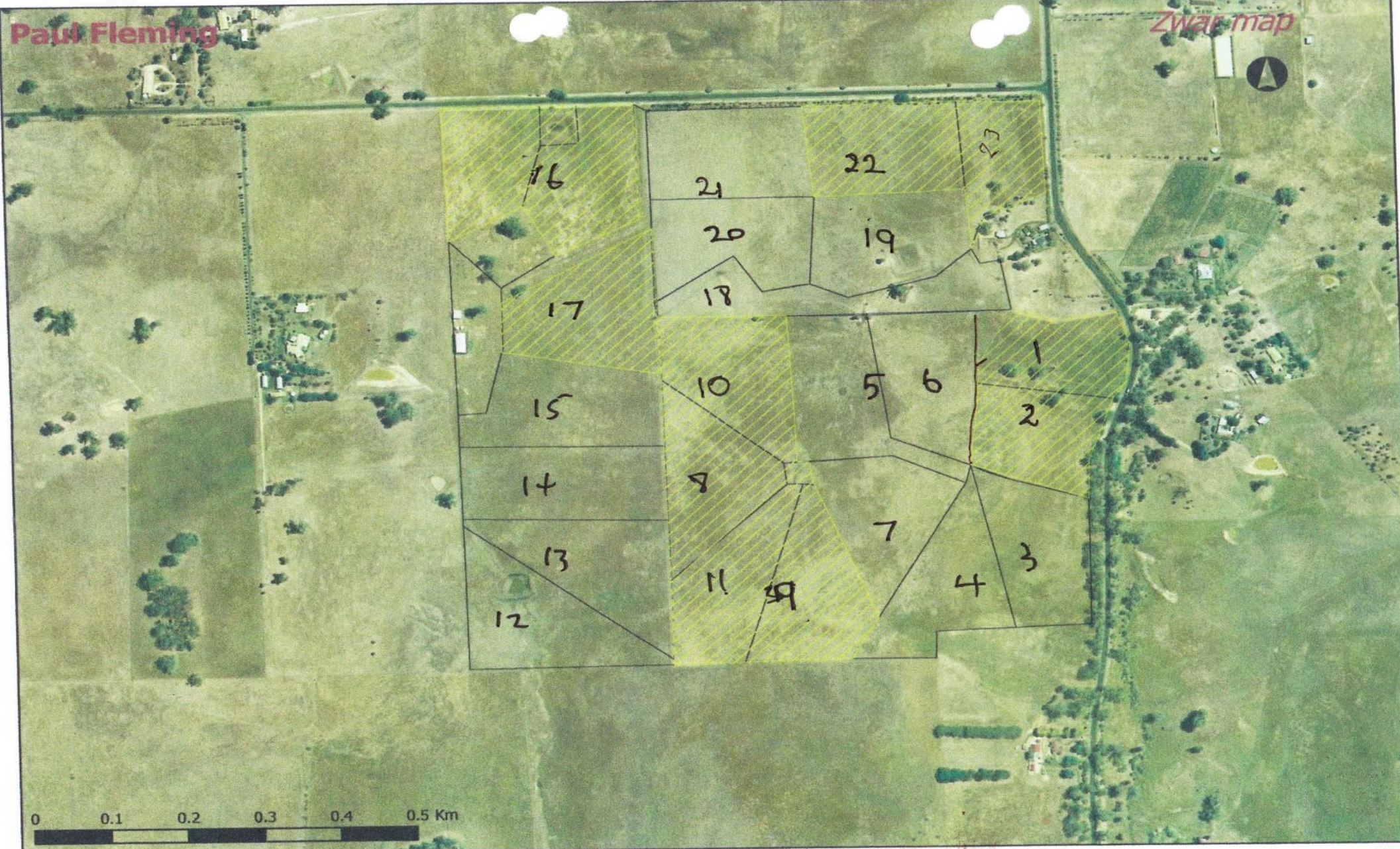


Paul Fleming's - Mia Mia Road Property



Paul Fleming

Zwar map



Brought to you by



With assistance from



With funding from



1:7,469

(c) The State of Victoria Department of Primary Industries 2012

Produced by GBCMA on 30 Aug 2012

Disclaimer: This publication may be of assistance to you but the State of Victoria and its employees do not guarantee that the publication is without flaw of any kind or is wholly appropriate for your particular purposes and therefore is all liability for any error, loss or other consequence which may arise from you relying on any information in this publication. All persons accessing this information should make enquiries to access the currency of the data.

Year	Landholder	Paddock	Ammonium sulphate	Dolomite	Gypsum	Limestone	Manganese oxide	P.Guano	Potassium sulphate	SuperPhos & potash	Trace element spray	Superfect & Potash	Lime	TE Spray K + Bo, no Mn, extra P, N
2013														
	Paul Fleming													
		Healy's 2 & 4				500				250	2.5	250	500	10
		Healy's 22 & 19		3000						250	2.5	250		10
		Zwars 1 & 2				2000				250	2.5	250	2000	10
		Zwars 22 & 23				2000				250	2.5	250	3000	10
2014														
	Paul Fleming													
		Healy's 2 & 4					10	0	100					
		Healy's 22 & 19					10	50	100					
		Zwars 1 & 2						120	160					
		Zwars 22 & 23						120	160					
	Rod Caplehorn													
		Rod Caple	200	2500	500				100					
2015														
	Paul Fleming													
		Healy's 2 & 4					10	0	100					
		Healy's 22 & 19					10	50	100					
		Zwars 1 & 2				2000		120	160					
		Zwars 22 & 23				3000		120	160					
	Rod Caplehorn													
		Rod Caple	200	0	0	2000		100	100				6	
Grand Total			400	5500	500	11500	40	680	1240	1000	10	1000	5500	40

Guano	Phosphate (P ₂ O ₅)	24-25.5%
(typical analysis)	Total Phosphorus	11.90%
	Organic Carbon	10%
	Potassium	0.16%
	Nitrogen	0.64%
	Sulphur	0.60%
	Calcium	30.50%
	Magnesium	1.90%
	Sodium	0.08%
	Manganese	22276 mg/kg
	Zinc	2597 mg/kg
	Copper	522 mg/kg
	Iron	24339 mg/kg
	Aluminium	28000 mg/kg
	Boron	42.4 mg/kg
	Cobalt	13.04 mg/kg
	Molybdenum	5.35 mg/kg











Winter production benefits

		Average kg/ha/day			
Paddock	Cell	Treated	Control	Difference	Percentage change
Healey's	2 & 4	11.275	5	6.275	126%
	22 & 19	11.25	4.2	7.05	168%
Zwars	1 & 2	9.25	6.2	3.05	49%
	22 & 23	9.25	7.2	2.05	28%

Spring production benefits

		Average kg/ha/day			
		Treated	Control	Difference	Percentage change
Healey's	2 & 4	36	10.3	25.7	71%
	19	33.8	17.9	15.9	47%
Zwars	1 & 2	20	14.2	5.8	29%
	22 & 23	23.5	17.9	5.6	24%

Summary soil tests for Paul Flemings Healeys			
	Control	22	
	18-Sep-15	18-Sep-15	Prefered Range
pH (CaCl2)	4.88	6.24	4.6 - 6.5
Organic Carbon (%)	2.54	2.26	2 TO 6
Phosphorous (Olsen)	6	12	15 -25
Ca:Mg Ratio	2.91	4.69	4 TO 6
Sulphur (MCP)	13.3	86.1	6 to 18
Manganese (DTPA)	26	30	5 to 60 ¹⁴

Summary soil tests for Paul Flemings Zwars			
	Control	1 & 2	
	18-Sep-15	18-Sep-15	Prefered Range
pH (CaCl2)	5.53	5.99	4.6 - 6.5
Organic Carbon (%)	4.13	3.47	2 TO 6
Phosphorous (Olsen)	5	6	15 -25
Ca:Mg Ratio	1.71	2.51	4 TO 6
Sulphur (MCP)	31.7	23.2	6 to 18
Manganese (DTPA)	26	26	5 to 60





Paul Fleming Quotes

- “ Carrying capacity has increased and so has clover”
- “We need to Utilise the extra feed grown”
- “ The extra fed gave me options”



This project is supported by the Goulburn Broken Catchment Management Authority's Beyond SoilCare program through funding from the Australian Government's National Landcare Program.



